

The 2017-2018 Report of Degrees Awarded  
by the University of Missouri

Randy Sade  
Senior Research Analyst

Office of Institutional Research  
University of Missouri System

September 2018

UM-IR 2018, Report 1

<http://www.umsystem.edu/ums/fa/ir/>

# The 2017-2018 Report of Degrees Awarded by the University of Missouri

## Executive Summary

This report includes graphs and tables of degrees awarded by each campus since FY 2009. The first table provides a summary of degrees by level for each campus, while the second table series gives the number of awards by the colleges of each campus. The \_\_\_\_\_ reflects the number of degrees awarded by academic department. These tables also show the average number of degrees over a 3, 5, & 10-year period and the percent change in FY 2018 that is relative to the 10-year average.

The highlights of the report from the Table 1 series include:

The University of Missouri System awarded 18,455 degrees and certificates, a 9% growth in FY 2018 relative to the 10-year average.

Relative to the 10-year average, the number of FY 2018 doctorate degrees for the University of Missouri System increased 25% and graduate certificates increased 46%.

Comparing FY 2018 degrees to the 10-

## Notes Regarding Use of the Report:

The official annual reporting period is from July 1 to June 30 of the following calendar year. For example, FY18 includes summer and fall graduates from 2017 and the spring graduates of 2018.

Please note the axis scale range when considering graphs. It may change from campus to campus.

Previous year's tables may differ because tables in the report have been changed from the use of running averages to 3-, 5-, and 10-year averages.

This report includes a 10-year average as related to FY 2018.

Source for this report is the printed Completions Report.

## Technical Notes for Use with the Report:

### Footnotes

Footnotes are of the utmost importance in reading tables in the appendix.

### Name Changes

If a program name changes, the report history is changed to reflect the new name and is footnoted.

If a degree name or description is changed, the report history is changed to the new description and is footnoted.

If a department name changes, the report history is changed to the new description and NO footnotes are made.

If a school or college changes, the report history is changed to the new description and NO footnotes are made.

### Program Moves

If a program moves to another department or school, the data are reported as is – that is, report history is not changed and new data are reported in the new department. A new footnote is added, i.e., program is moving. Eventually – when there are no more degrees for the old department, the old department is hidden in the report.

Figure 1.0: Rate of Change in Total Degrees & Certificates Awarded for the University of Missouri System, since 2009

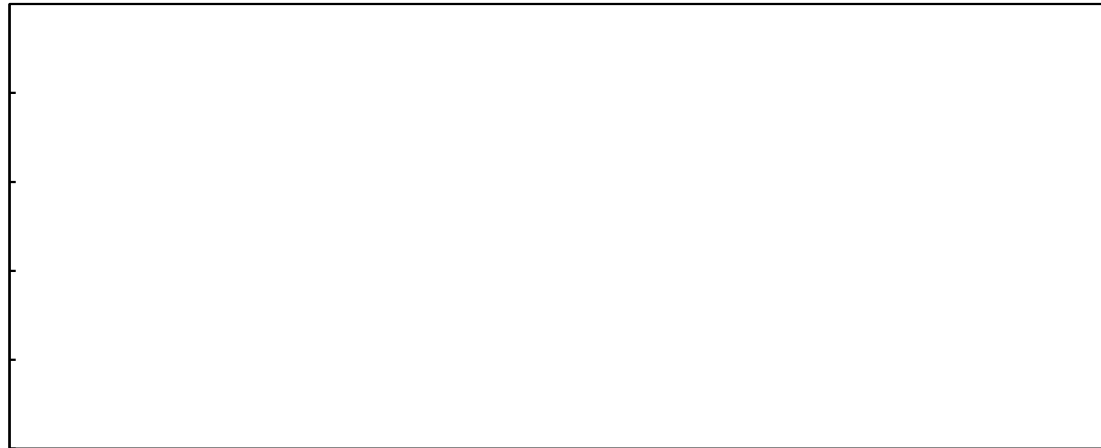


Table 1.0: Degrees and Certificates Awarded for the University of Missouri System, July 1, 2008 through June 30, 2018

DEGREE	FY 2009	FY 2010	FY 2011	FY 2012	FY 2013	FY 2014	FY 2015	FY 2016	FY 2017	FY 2018	3-Year	<u>Average</u> 5-Year	10-Year	Change in FY18 relative to the 10-Year Avg.
<b>UNIVERSITY OF MISSOURI SYSTEM</b>														
Undergrad. Certificate	2	1	4	2	2	23	55	44	56	66	55.3	48.8	25.5	159%
Bachelors	9,289	9,604	9,699	10,317	10,543	10,733	11,360	11,654	11,546	11,669	11,623.0	11,392.4	10,641.4	10%
Graduate Certificate	438	520	539	623	781	740	780	839	869	1,047	918.3	855.0	717.6	46%
First Professional	763	800	818	790	847	837	876	833	829	832	831.3	841.4	822.5	1%
Masters	3,620	3,608	3,870	4,069	3,919	4,013	4,204	4,330	4,217	3,956	4,167.7	4,144.0	3,980.6	-1%
Education Specialist	148	123	100	104	115	113	122	100	93	67	86.7	99.0	108.5	-38%
Doctorate	487	519	557	610	660	640	712	720	816	818	784.7	741.2	653.9	25%
<b>Total, All Awards</b>	<b>14,747</b>	<b>15,175</b>	<b>15,587</b>	<b>16,515</b>	<b>16,867</b>	<b>17,099</b>	<b>18,109</b>	<b>18,520</b>	<b>18,426</b>	<b>18,455</b>	<b>18,467.0</b>	<b>18,121.8</b>	<b>16,950.0</b>	<b>9%</b>

Figure 1.1: Rate of Change in Total Degrees & Certificates Awarded at the University of Missouri Columbia, since 2009

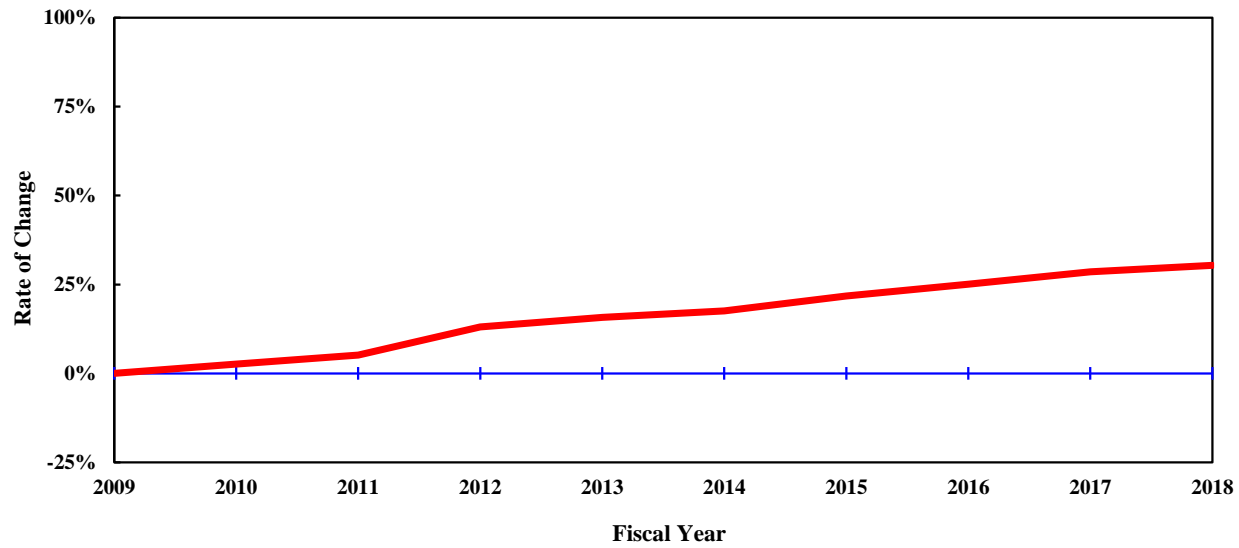


Table 1.1: Degrees and Certificates Awarded at the University of Missouri Columbia, July 1, 2008 through June 30, 2018

	FY 2009	FY 2010	FY 2011	FY 2012	FY 2013	FY 2014	FY 2015	FY 2016	FY 2017	FY 2018	3-Year	<u>Average</u> 5-Year	10-Year	Change in FY18 relative to the 10-Year Avg.
DEGREE														
Bachelors	4,855	4,963	5,087	5,528	5,692	5,769	5,995	6,283	6,331	6,512	6,375.3	6,178.0		



Figure 1.3: Rate of Change in Total Degrees & Certificates Awarded at the Missouri University of Science and Technology, since 2009

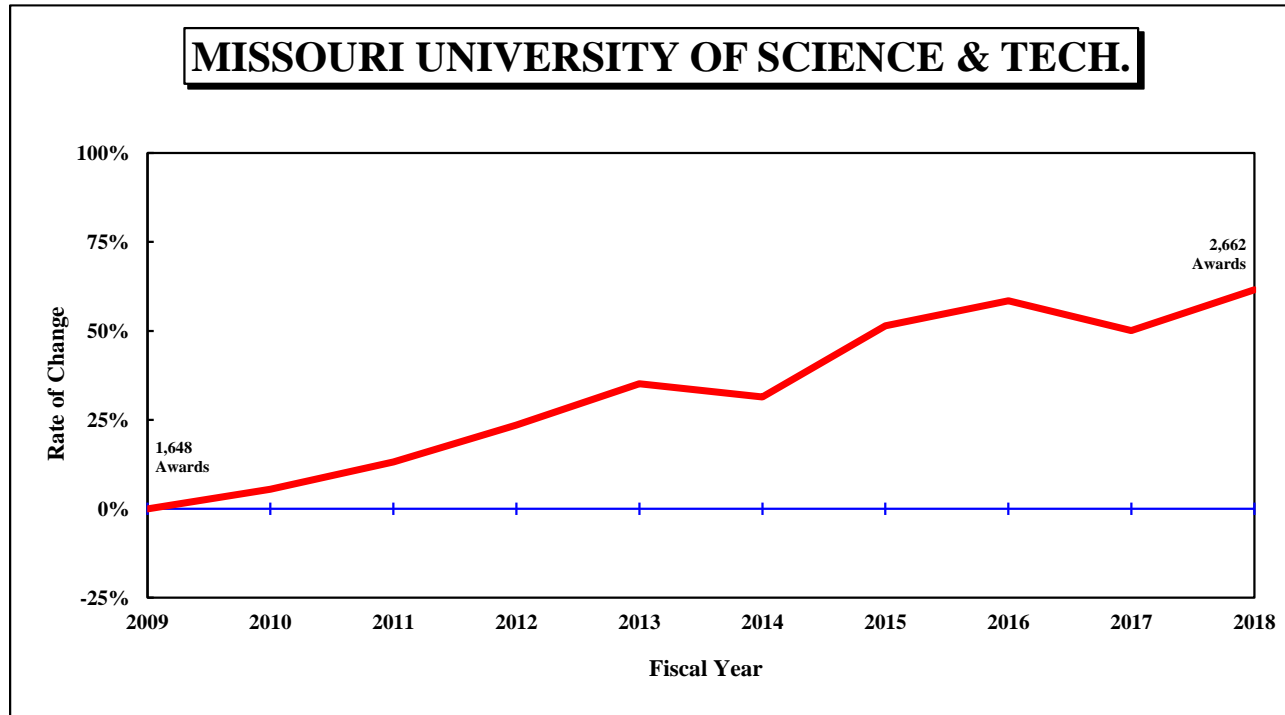


Table 1.3: Degrees and Certificates Awarded at the Missouri University of Science and Technology, July 1, 2008 through June 30, 2018

Figure 1.4: Rate of Change in Total Degrees & Certificates Awarded at the University of Missouri St. Louis, since 2009

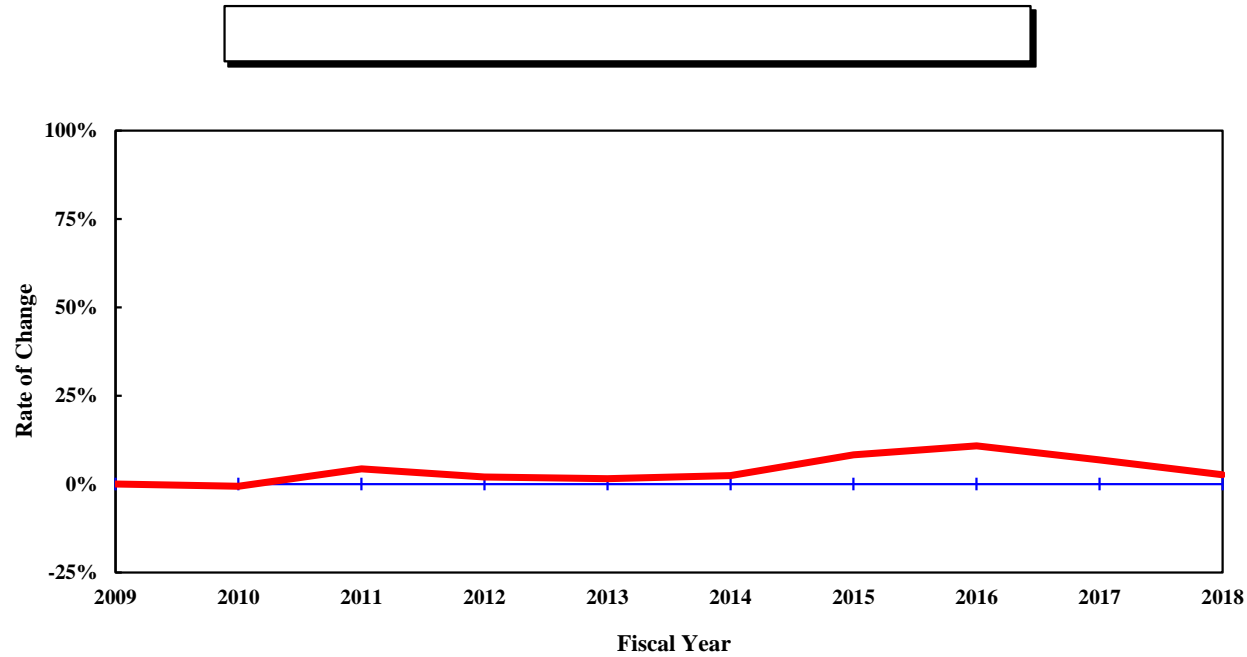


Table 1.4: Degrees and Certificates Awarded at the University of Missouri St. Louis, July 1, 2008 through June 30, 2018

DEGREE	FY	FY	FY	FY	FY	FY	FY	FY	FY	FY	<u>Average</u>			Change in FY18 relative to the 10-Year Avg.
	2009	2010	2011	2012	2013	2014	2015	2016	2017	2018	3-Year	5-Year	10-Year	
<b>UNIVERSITY OF MISSOURI - ST. LOUIS</b>														
Undergrad. Certificate					2	20	34	29	37	35	33.7	31.0	N/A	
Bachelors	2,018	2,011	2,092	1,963	1,974	2,020	2,246	2,252	2,071	1,988	2,103.7	2,115.4	2,063.5	-4%
Graduate Certificate	80	82	71	96	88	80	87	116	123	121	120.0	105.4	94.4	28%
First Professional	44	41	44	47	40	39	41	45	43	39	42.3	41.4	42.3	-8%
Masters	771	771	868	872	871	854	761	810	826	819	818.3	814.0	822.3	0%
Education Specialist	42	31	22	26	28	13	14	17	17	9	14.3	14.0	21.9	-59%
Doctorate	63	63	50	74	61	64	84	75	106	87	89.3	83.2	72.7	20%
<b>Total, All Awards</b>	<b>3,018</b>	<b>2,999</b>	<b>3,147</b>	<b>3,078</b>	<b>3,064</b>	<b>3,090</b>	<b>3,267</b>	<b>3,344</b>	<b>3,223</b>	<b>3,098</b>	<b>3,221.7</b>	<b>3,204.4</b>	<b>3,132.8</b>	<b>-1%</b>



Figure 2.0: Rate of Change in Total Degrees Awarded, since 2009

UNIVERSITY OF MISSOURI SYSTEM

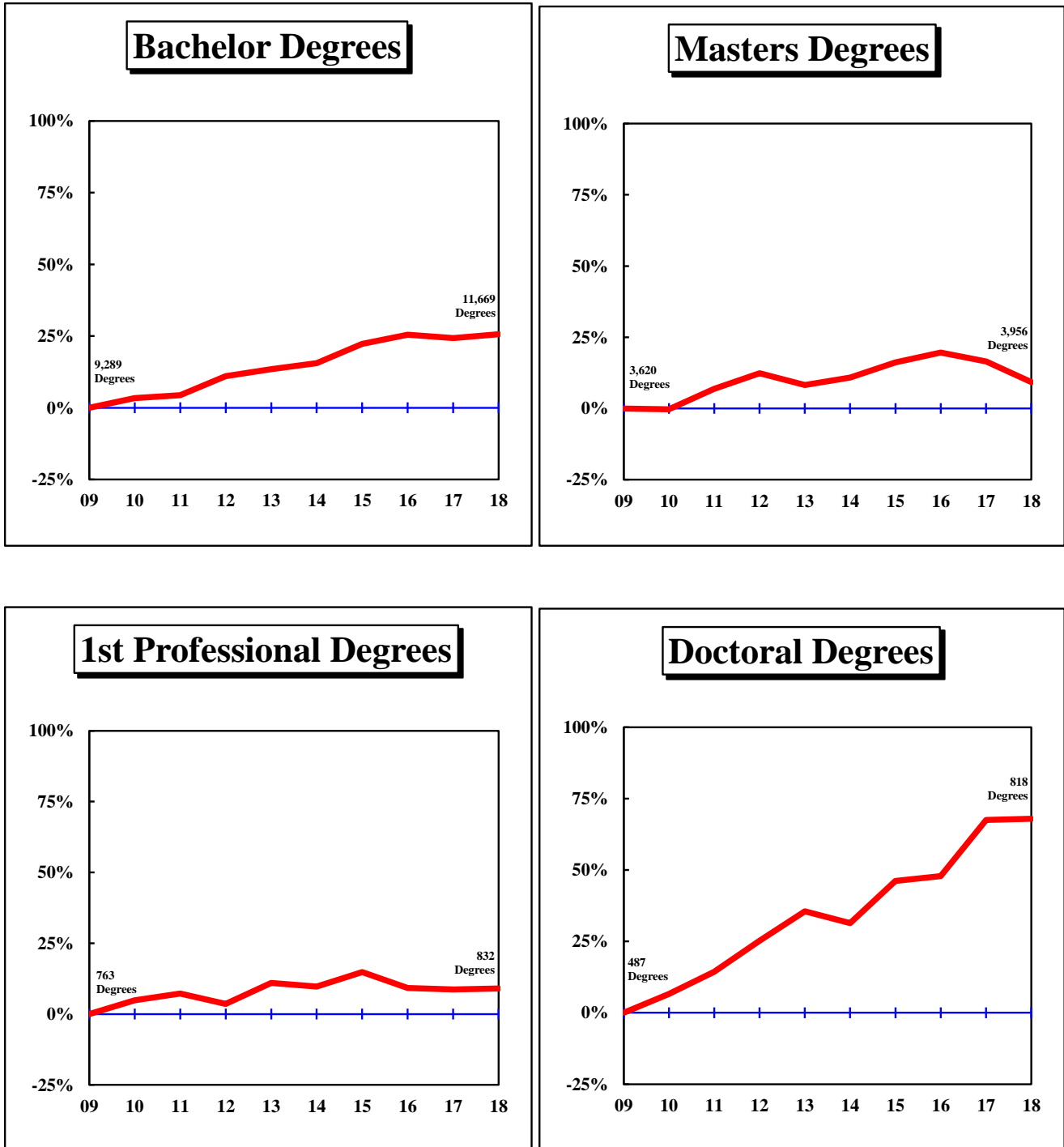


Figure 2.1: Rate of Change in Total Degrees Awarded by Campus, since 2009

UNIVERSITY OF MISSOURI COLUMBIA

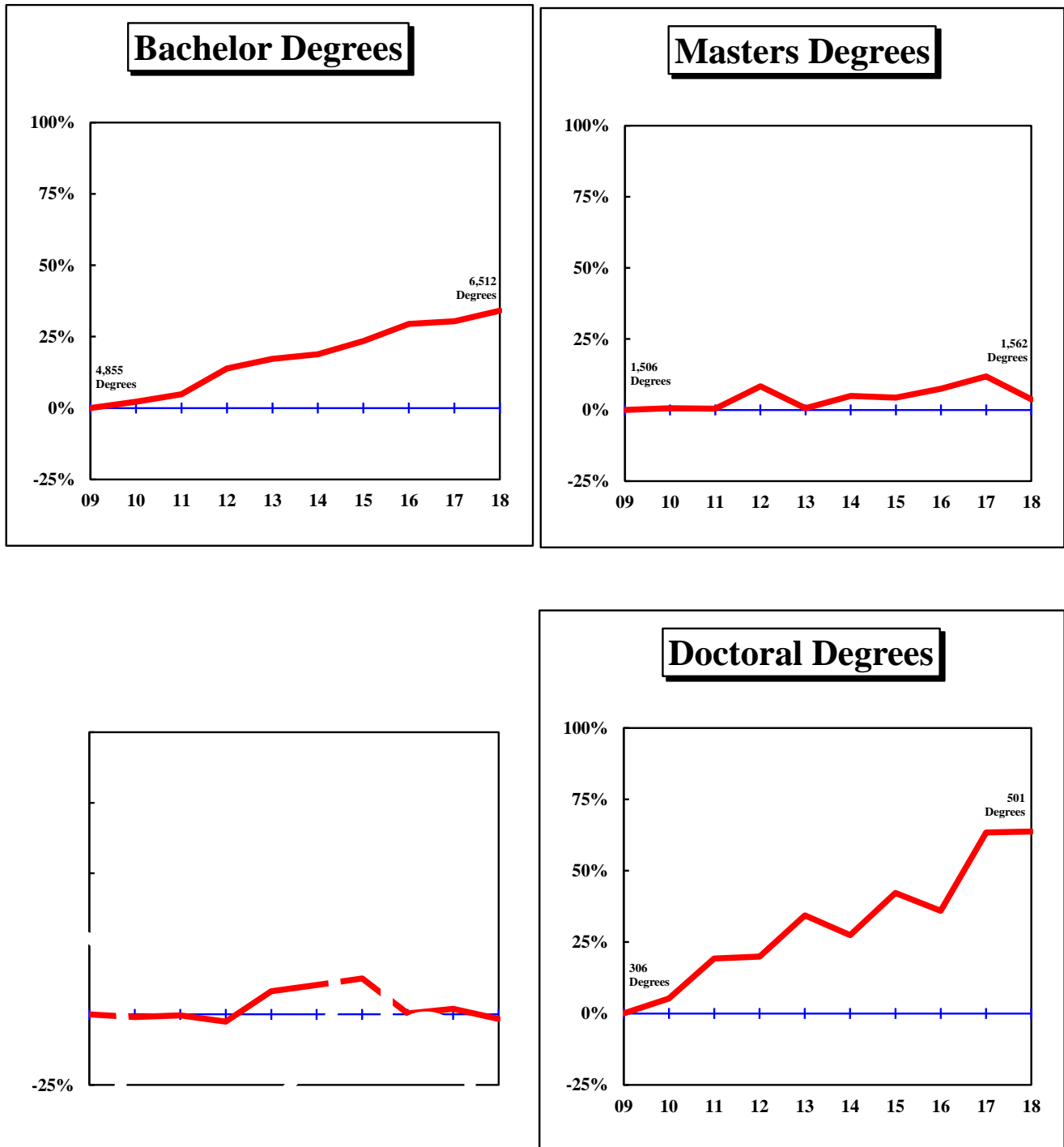


Figure 2.2: Rate of Change in Total Degrees Awarded by Campus, since 2009

UNIVERSITY OF MISSOURI KANSAS CITY

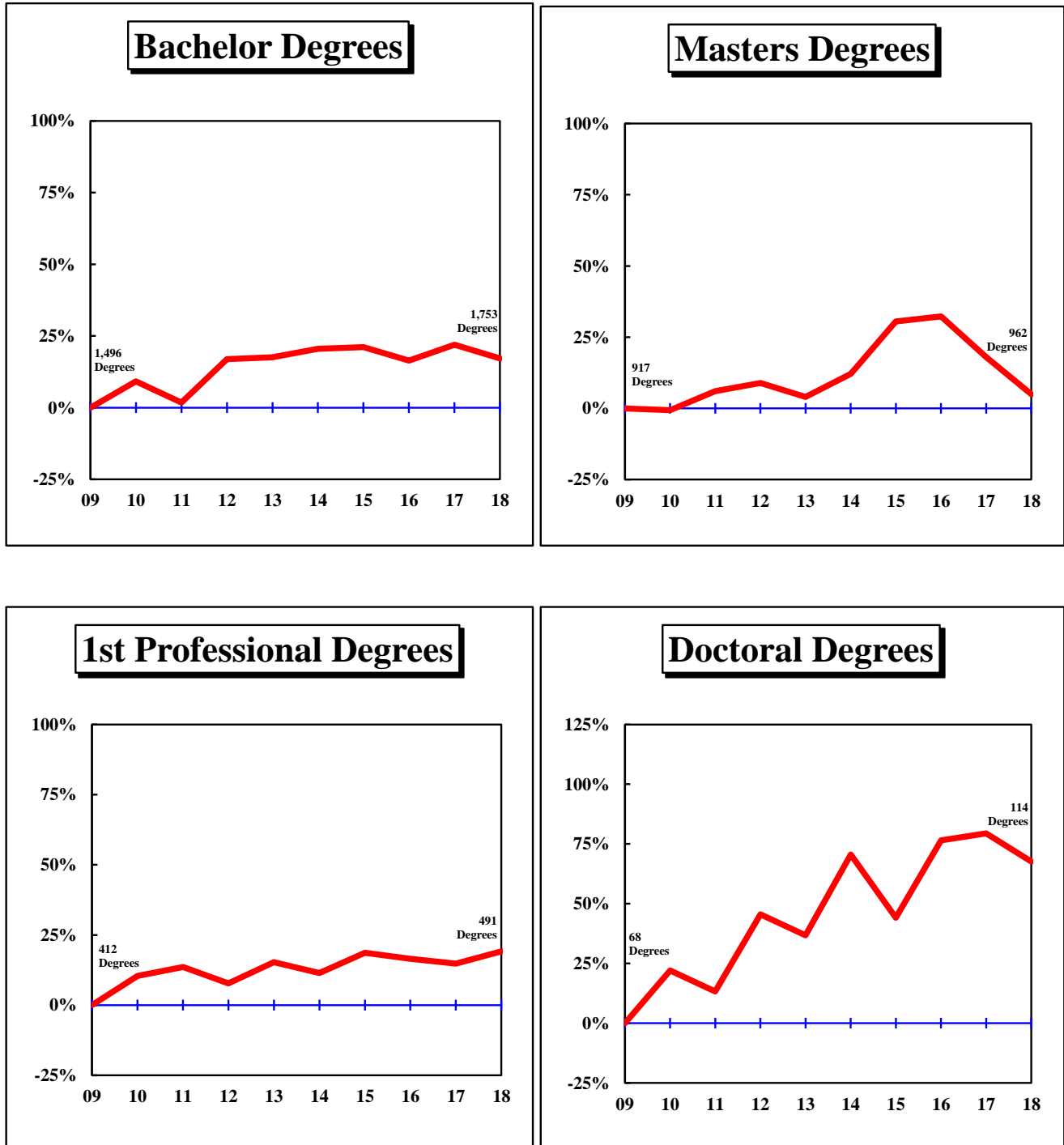


Figure 2.3: Rate of Change in Total Degrees Awarded by Campus, since 2009

MISSOURI UNIVERSITY OF SCIENCE AND TECHNOLOGY

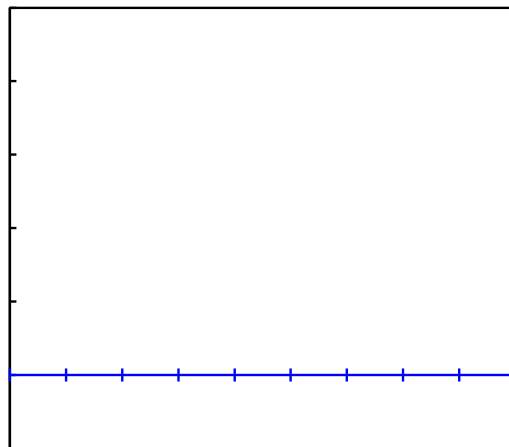
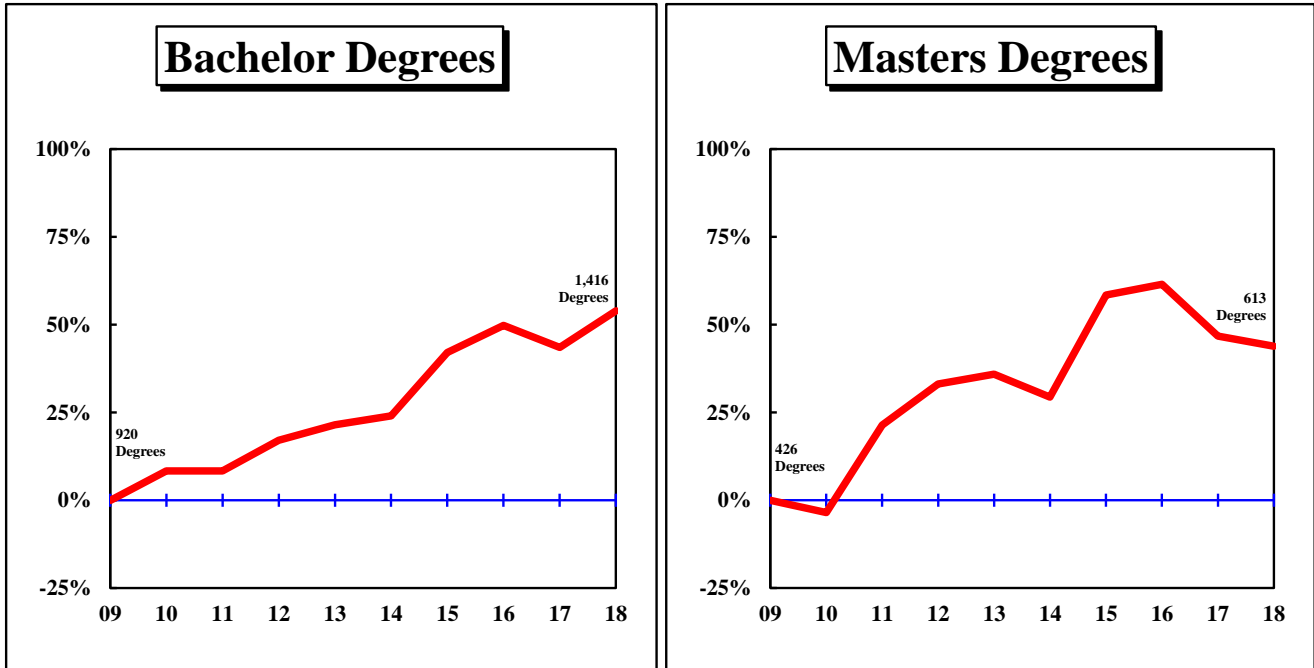
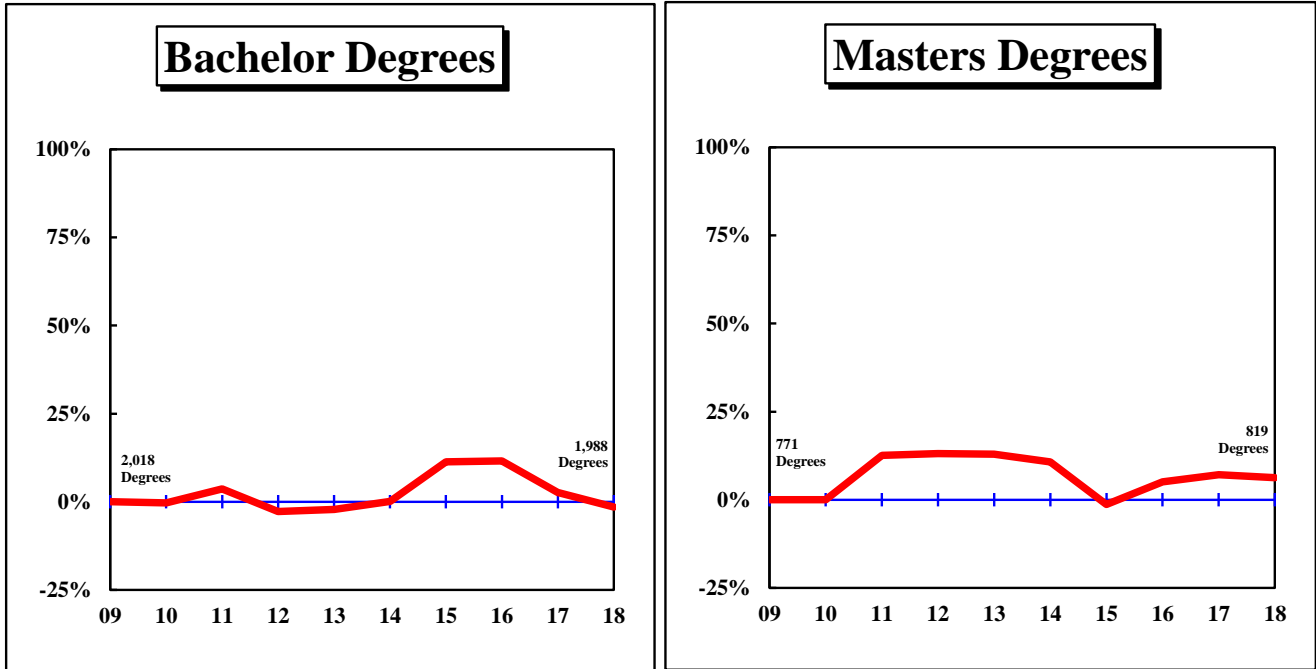


Figure 2.4: Rate of Change in Total Degrees Awarded by Campus, since 2009

UNIVERSITY OF MISSOURI ST. LOUIS



**1st Professional Degree**

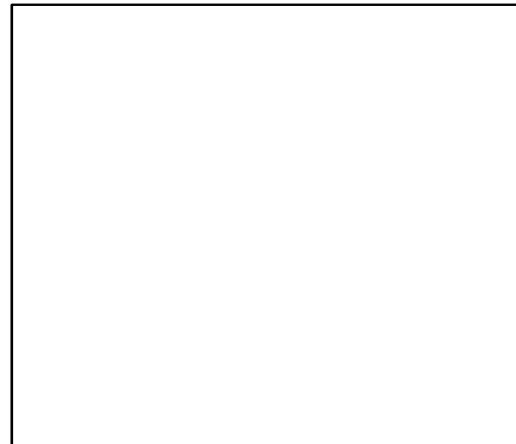
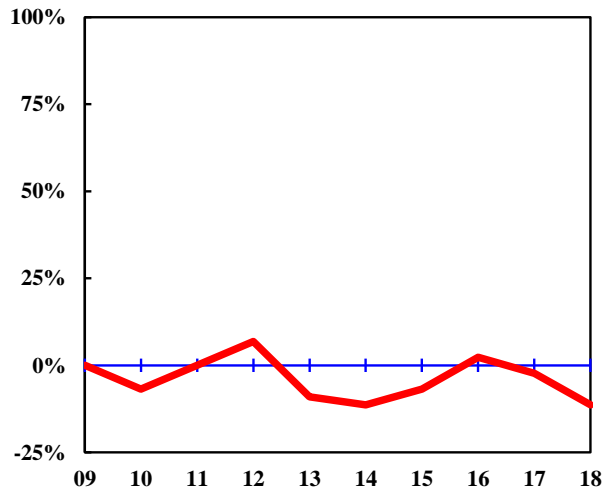


Table 2.1: Degrees and Certificates Awarded by Colleges at the University of Missouri Columbia

COLLEGE/DEGREE	FY 2009	FY 2010	FY 2011	FY 2012	FY 2013	FY 2014	FY 2015	FY 2016	FY 2017	FY 2018	3-Year	<u>Average</u> 5-Year	10-Year	Change in FY18 relative to the 10-Year Avg.
Bachelors	391	383	400	432	491	460	491	528	529	547	534.7	511.0	465.2	18%
Masters	51	38	45	51	44	68	38	63	47	49	53.0	53.0	49.4	

Table 2.1: Degrees and Certificates Awarded by Colleges at the University of Missouri Columbia (continued)

COLLEGE/DEGREE	FY 2009	FY 2010	FY 2011	FY 2012	FY 2013	FY 2014	FY 2015	FY 2016	FY 2017	FY 2018	3-Year	<u>Average</u> 5-Year	10-Year	Change i relative 1 10-Year
Bachelors	298	274	275	279	309	318	269	282	336	323	313.7	305.6	296.3	9%
Masters	35	17	30	34	28	26	41	38	36	32	35.3	34.6	31.7	1%
Doctorate	9	8	12	7	9	11	20	12	13	13	12.7	13.8	11.4	14%
All	342	299	317	320	346	355	330	332	385	368	361.7	354.0	339.4	8(3)

Table 2.1: Degrees and Certificates Awarded by Colleges at the University of Missouri Columbia (continued)

COLLEGE/DEGREE	FY 2009	FY 2010	FY 2011	FY 2012	FY 2013	FY 2014	FY 2015	FY 2016	FY 2017	FY 2018	3-Year	<u>Average</u> 5-Year	10-Year	Change in FY18 relative to the 10-Year Avg.
Masters														



Table 2.2: Degrees and Certificates Awarded by Colleges at the University of Missouri–Kansas City

FY FY FY FY FY FY FY FY FY FY

Change i

Table 2.2: Degrees and Certificates Awarded by Colleges at the University of Missouri–Kansas City (continued)

Table 2.2: Degrees and Certificates Awarded by Colleges at the University of Missouri-Kansas City (continued)

COLLEGE/DEGREE	FY	FY	FY	FY	FY	FY	FY	FY	FY	FY	3-Year	<u>Average</u>			Change in FY18 relative to the 10-Year Avg.
	2009	2010	2011	2012	2013	2014	2015	2016	2017	2018		5-Year	10-Year		
<b>PHARMACY, SCHOOL OF</b>															
Bachelors	8	7	14	9	7	4					N/A	N/A	N/A		
First Profes.	70	111	113	106	122	125	125	122	124	136	127.3	126.4	115.4	18%	
Masters	1	1	0	0							N/A	N/A	N/A		
All	79	119	127	115	129	129	125	122	124	136	127.3	127.2	120.5	13%	

UM-IR/RS 8/18

Table 2.3: Degrees and Certificates Awarded by Colleges at the Missouri University of Science and Technology

COLLEGE/DEGREE	FY 2009	FY 2010	FY 2011	FY 2012	FY 2013	FY 2014	FY 2015	FY 2016	FY 2017	FY 2018	3-Year	<u>Average</u> 5-Year	10-Year	Change in FY18 relative to the 10-Year Avg.
<b>ARTS, SCIENCES, AND BUSINESS, COLLEGE OF</b>														
U-Grad. Certif.										1	N/A	N/A	N/A	
Bachelors							292	287	259	219	255.0	N/A	N/A	
Grad. Certif.							39	43	62	70	58.3	N/A	N/A	
Masters							88	90	80	80	83.3			

Table 2.4: Degrees and Certificates Awarded by Colleges at the University of Missouri–St. Louis

FY	FY	FY	FY	FY	FY	FY	FY	FY	FY	<u>Average</u>	Change in FY18 relative to the
----	----	----	----	----	----	----	----	----	----	----------------	-----------------------------------

Table 2.4: Degrees and Certificates Awarded by Colleges at the University of Missouri