

**University of Missouri System
Undergraduate Financial Aid Summary Report
FY2009-FY2013**

(Missouri Resident Undergraduate Students)

Report Prepared by
Dr. La Shonda Carter-Boone
Senior Institutional Research Analyst

Office of Institutional Research and Planning
714 Lewis Hall
University of Missouri System

December 2013

IR&P 2013, Report 6

Boonel@umsystem.edu
573-884-3104

**University of Missouri System
Undergraduate Financial Aid Summary Report
FY2009-FY2013**

- x Missouri resident undergraduate students in the lower income categories had the highest grant aid as a percentage of tuition and required fees (Table 1.2).
- x The volume of Parent Loans for Undergraduate Students (PLUS loans) increased from FY09 to FY13 for students with financial need and decreased for students without need. In FY09, 3,422 parents borrowed an average \$9,402 to meet their child's education expenses. Five years later, 3,614 parents borrowed approximately \$10,631 to cover these expenses. System-wide, the amount of PLUS loans distributed increased from \$32.2 million in FY09 to \$38.4 million in FY13 (Table 1.4).
- x Students with incomes less than \$40,000 have the highest amount of financial need and receive larger total financial aid awards than higher income students. However, lower income students continue to have the largest amount of unmet financial need (Figure 1.4).
- x The unmet financial need of students increased in all income levels over the past five years (Figure 1.5).

Campus-specific variations from System trends:

- x Compared to the St. Louis and Kansas City campuses, grant aid distributed to

Foremost, a BUDGETED COST OF ATTENDANCE (COA) is determined for every student that completes a FAFSA. The COA varies by student and is based on factors such as residency status, load status (full or part-time), and living arrangements (on or off-campus). Next the amount that the family is expected to contribute to cover the COA is determined based on several factors, including the family's adjusted gross income. A student's financial need is determined by subtracting the EXPECTED FAMILY CONTRIBUTION from the budgeted COA. If the calculated value of FINANCIAL NEED is positive, the student is eligible to receive need-based assistance such as pell grants, college work study and need based loans. A student's REMAINING NEED is determined after subtracting GRANT AID (aid that does not have to be repaid) from the FINANCIAL NEED. After subtracting the remaining sources of financial aid (i.e. work study, need-based loans, and alternative loans), an UNMET NEED value is determined, which is the remaining amount of money a student needs to meet the COA after all financial assistance has been provided.

Caveats

Although Figure A.1 provides a good example of how financial aid packages are determined for students, a few caveats are worth mentioning:

1. The unmet need value is based on all of the financial aid that a student ACCEPTED which does not always equal the amount of aid a student was OFFERED. For example, a student might decline a need-based loan or alternative loan which would have covered the student's remaining cost of attendance. That student would have unmet financial need even though ample aid was offered to meet the budgeted COA.
2. A student's financial need might change during the academic year based on changes to the student's budgeted COA. For example, a student might live on-campus the first semester and decide to live off-campus the next semester.
3. Many students take part-time jobs to meet the COA. However, the compensation received from part-time jobs (other than college work study) is not documented and does not count towards meeting the COA. In essence, many students work to meet the COA and for these students the true unmet need is unknown.
4. Many families borrow the "expected family contribution" and the amount borrowed is not factored into the total financial aid package, i.e. it is not counted as financial aid. Therefore, in many cases, the true financial need of a student is underestimated.

Section I

System-wide Financial Aid Trends of Full-Time, Degree-Seeking Missouri Undergraduates from FY09 to FY13

PLEASE NOTE: The findings below highlight system-wide trends at the University of Missouri. Financial aid trends may differ by campus and are included in the second part of this report.

1. How many students received aid and what type of aid was received?

The total number of full-time, degree-seeking resident undergraduates steadily increased over the past five years from 30,611 to 33,142, an increase of over 8%. With this increase in enrollment, there has been a 23.6% increase in the number of students with financial need from 14,954 in FY09 to 18,483 in FY13 (Figure 1.1).

2. Has grant aid kept pace with increases in tuition and required fees?

Over the past five years tuition and required fees increased 10% and the budgeted cost of attendance increased 7.2% while average grant aid increased 8.5%. The overall trend is that there is a slightly increasing gap between tuition and required fees and the average grant aid awarded to undergraduates (Figure 1.2).

3. How has the distribut4(u)6(t) /P <<T((w)-4(u)6(t)3()10(4(u)6(t) /P <(784(.)-4) /P <<T(-2(o u7j I

5. What percent of tuition and required fees is met by grant aid?

Lower income students have the most financial need and on average receive much more grant aid than higher income students. In FY09, grant aid covered nearly 78% of tuition and required fees for students with income less than \$20,000 and 74% for students with income between \$20,000 and \$40,000. By FY13, grant aid covered 74% of tuition and required fees for students with income less than \$20,000 and remained at 74% for students with income between \$20,000 and \$40,000. (Table 1.2).

6. How has t

	FY09	FY10	FY11	FY12	FY13	5-yr # Change	5-yr % Change
Completed FAFSA, did not have a need	5,961	5,933	5,744	5,674	5,887	-74	-1.2%
Grant aid, no FAFSA	<u>3,505</u>	<u>2,963</u>	<u>2,866</u>	<u>2,759</u>	<u>2,755</u>	<u>-750</u>	-21.4%
Aid recipients with no need	9,466	8,896	8,610	8,433	8,642	-824	-8.7%
Aid recipients with need*	14,954	16,822	17,864	18,734	18,483	3,529	23.6%
Full pay / No aid	6,191	5,892	6,012	5,861	6,017	-174	-2.8%
Total of all full- time, Degree-Seeking	<u>30,611</u>	31,610	32,486	33,028	33,142	2,531	8.3%

* All aid recipients with need completed a FAFSA and were not expected to pay the entire cost of attendance.
Note: Undergraduate Pharmacy and Medical students have been removed from this analysis.

Source: UIDS, EMSAS, and PeopleSoft
IR&P/LCB 12/13

	FY09	FY10	FY11	FY12	FY13	5-yr # Change	5-yr % Change
Budgeted Cost of Attendance	\$21,354	\$22,039	\$22,682	\$23,501	\$22,900	\$1,546	7.2%
Tuition & Required Fees	\$8,456	\$8,464	\$8,566	\$9,035	\$9,305	\$849	10.0%
Average Grant Aid	\$4,078	\$4,383	\$4,270	\$6,300	\$6,300	[(7.)-41(24.)-4321(078)]TJ 4.3752d [(\$4.)-4	

Table 1.1

Students with Need											
Type of Award	Need*	# of Awards	Average Award	# of Awards	Average Award	# of Awards	Average Award	# of Awards	Average Award	# of Awards	Average Award
		3,969	\$2,493	3,742	\$1,999	3,173	\$2,290	4,180	\$2,481.73	5,368	\$2,307
	Merit	5,651	\$2,909	6,080	\$3,191	6,667	\$3,086	7,092	\$3,210	7,044	\$3,180
	Other**	641	\$2,145	716	\$2,341	748	\$2,207	729	\$2,568	694	\$2,652
	Total	10,261	\$2,700	10,538	\$2,710	10,588	\$2,785	12,001	\$2,917	13,106	\$2,795

Students without Need

# of Awards	Average Award	# of Awards
-------------	---------------	-------------

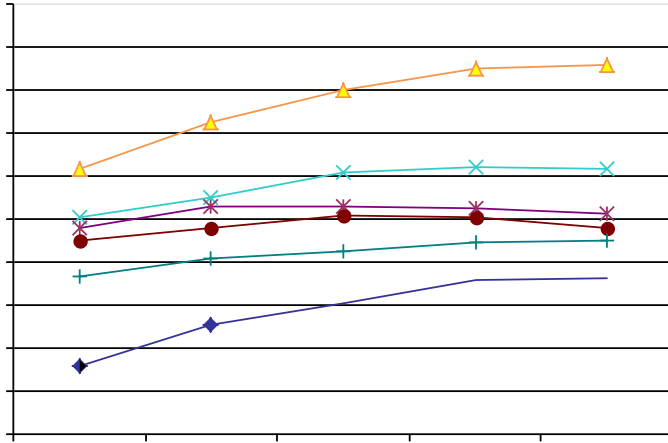
Table 1.3

Total Financial

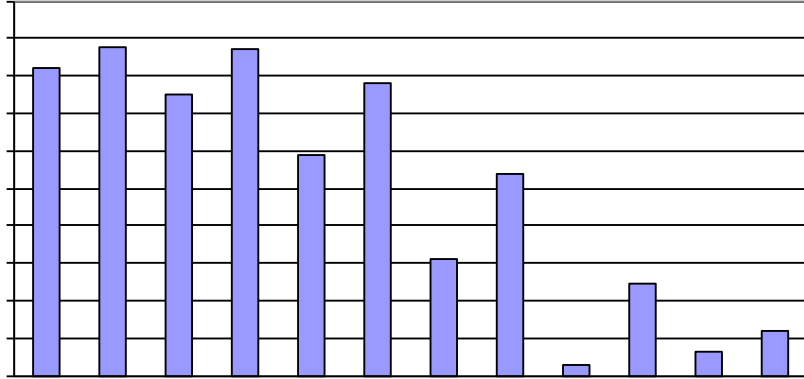
Financial Aid as % of Cost of

Income	FY09					FY13				
	Exp Family Contributions	Gift Aid	Work Study	Level Loans	% Unmet COA	Exp Family Contributions	Gift Aid	Work Study	Loans	% Unmet COA
<\$20,000	4%	29%	1%	30%	37%	1%	30%	1%	31%	37%
\$20,000 to \$40,00	13%	29%	1%	22%	34%	7%	30%	1%	25%	38%
\$40,000 to \$60,000	28%	23%	1%	21%	27%	20%	24%	1%	22%	34%
\$60,000 to \$80,000	50%	18%	1%	17%	15%	40%	17%	0%	19%	24%
\$80,000 to \$100,000	72%	12%	0%	13%	1%	60%	12%	0%	16%	11%
>\$100,000	72%	11%	0%	14%	3%	70%	11%	0%	13%	5%

Source: UIDS, PeopleSoft
IR&P/LCB 12/13



Source: UIDS, PeopleSoft
IR&P/LCB 12/13



Source: UIDS, PeopleSoft
IR&P/LCB 12/13

Table 1.5

	FY09	FY10	FY11	FY12	FY13	FY09	FY10	FY11	FY12	FY13	# Change FY09-FY13	% Change FY09-FY13
Total Enrolled for 9 months (N)	3,071	3,609	3,995	4,231	4,272						1,201	39%
Cost of Attendance	\$22,395	\$23,125	\$23,996	\$24,619	\$23,392						\$997	4%
Less Expected Family Contribution*	<u>813</u>	<u>588</u>	<u>506</u>	<u>385</u>	<u>319</u>	4%	3%	2%	2%	1%	-494	-61%
Financial Need	21,582	22,537	23,490	24,234	23,073	96%	97%	98%	98%	99%	1,491	7%
Less Grant Aid	6,586	7,075	6,854	6,726	6,927	29%	31%	29%	27%	30%	341	5%
Unmet Need	\$14,996	\$15,462	\$16,636	\$17,508	\$16,146	67%	67%	69%	71%	69%	1,150	8%
% Grant Aid that Met Financial Need	31%	31%	29%	28%	30%							
Non-Grant Source Remaining Unmet Financial												
College Work Study	\$258	\$254	\$179	\$195	\$187	1%	1%	1%	1%	1%	-71	-28%
Need-based Loans	3,698	3,896	3,823	3,866	3,814	17%	17%	16%	16%	16%	116	3%
Non-Need Based Loans	2,816	3,238	3,524	3,625	3,406	13%	14%	15%	15%	15%	590	21%
Remaining Unmet Need	\$8,224	\$8,074	\$9,111	\$9,822	\$8,739	37%	35%	38%	40%	37%	515	6%
*Amount Borrowed to meet EFC	\$508	\$380	\$324	\$241	\$184	2%	2%	1%	1%	1%	-324	-64%

	FY09	FY10	FY11	FY12	FY13	FY09	FY10	FY11	FY12	FY13	# Change FY09-FY13	% Change FY09-FY13
Total Enrolled for 9 months (N)	2,506	2,750	3,024	3,087	3,075						569	23%
Cost of Attendance	\$21,805	\$22,484	\$23,205	\$23,889	\$23,108						\$1,303	6%
Less Expected Family Contribution*	<u>2,855</u>	<u>1,802</u>	<u>1,805</u>	<u>1,553</u>	<u>1,694</u>	13%	8%	8%	7%	7%	-1,161	-41%
Financial Need	18,950	20,682	21,401	22,337	21,414	87%	92%	92%	93%	93%	2,464	13%
Less Grant Aid	6,298	7,265	6,981	6,894	6,869	29%	32%	30%	29%	30%	572	9%
Unmet Need	\$12,652	\$13,417	\$14,420	\$15,443	\$14,545	58%	60%	62%	65%	63%	\$1,892	15%
% Grant Aid that Met Financial Need	33%	35%	33%	31%	32%							
Non-Grant Source Remaining Unmet Financial												
College Work Study	252	234	185	206	180	1%	1%	1%	1%	1%	-72	-29%
Need-based Loans	3,573	3,693	3,686	3,772	3,617	16%	16%	16%	16%	16%	44	1%
Non-Need Based Loans	1,336	1,855	2,128	2,378	2,058	6%	8%	9%	10%	9%	723	54%
Remaining Unmet Need	\$7,492	\$7,634	\$8,420	\$9,087	\$8,690	34%	34%	36%	38%	38%	1,198	16%
*Amount Borrowed to meet EFC	\$1,407	\$942	\$1,003	\$852	\$877	6%	4%	4%	4%	4%	-531	-38%

	FY09	FY10	FY11	FY12	FY13	FY09	FY10	FY11	FY12	FY13	# Change FY09-FY13	% Change FY09-FY13
Total Enrolled for 9 months (N)	2,389	2,636	2,631	2,610	2,549						160	7%
Cost of Attendance	\$21,360	\$22,049	\$22,656	\$23,455	\$22,827						1,467	7%
Less Expected Family Contribution*	<u>5,938</u>	<u>5,122</u>	<u>5,082</u>	<u>4,755</u>	<u>4,480</u>	28%	23%	22%	20%	20%	-1,457	-25%
Financial Need	15,422	16,927	17,574	18,701	18,346	72%	77%	78%	80%	80%	2,924	19%
Less Grant Aid	4,986	5,448	5,123	5,198	5,453	23%	25%	23%	22%	24%	467	9%
Unmet Need	\$10,436	\$11,479	\$12,451	\$13,503	\$12,893	49%	52%	55%	58%	56%	2,457	24%
% Grant Aid that Met Financial Need	32%	32%	29%	28%	30%							
Non-Grant Source Remaining Unmet Financial												

Table 1.5 (Continued)

	F'09	F'10	F'11	F'12	F'13	F'09	F'10	F'11	F'12	F'13	# Change F'09-F'13	% Change F'09-F'13
Total Enrolled for 9 months (N)	2,243	2,395	2,524	2,516	2,392						149	7%
Cost of Attendance	\$21,055	\$21,779	\$22,344	\$23,161	\$22,758						\$1,703	8%
Less Expected Family Contribution*	<u>10,500</u>	<u>9,724</u>	<u>9,211</u>	<u>9,273</u>	<u>9,001</u>	50%	45%	41%	40%	40%	-1,498	-14%
Financial Need	10,555	12,055	13,133	13,888	13,757	50%	55%	59%	60%	60%	3,202	30%
Less Grant Aid	3,752	3,580	3,530	3,606	3,949	18%	16%	16%	16%	17%	198	5%
Unmet Need	\$6,803	\$8,475	\$9,604	\$10,281	\$9,807	32%	39%	43%	44%	43%	3,004	44%
% Grant Aid that Met Financial Need	36%	30%	27%	26%	29%							
Non-Grant Sources												
Remaining Unmet Financial Need												
College Work Study	\$141	\$115	\$77	\$101	\$72	1%	1%	0%	0%	0%	-69	-49%
Need-based Loans	3,194	3,528	3,611	3,595	3,441	15%	16%	16%	16%	15%	247	8%
Non-Need Based Loans	375	632	817	893	904	2%	3%	4%	4%	4%	529	141%
Remaining Unmet Need	\$3,094	\$4,200	\$5,098	\$5,693	\$5,390	15%	19%	23%	25%	24%	2,296	74%
*Amount Borrowed to meet EFC	\$3,278	\$3,242	\$3,115	\$3,116	\$3,101	16%	15%	14%	13%	14%	-177	-5%
	F'09	F'10	F'11	F'12	F'13	F'09	F'10	F'11	F'12	F'13	# Change F'09-F'13	% Change F'09-F'13
Total Enrolled for 9 months (N)	1,831	2,033	2,123	2,212	2,249						418	23%
Cost of Attendance	\$21,230	\$21,834	\$22,328	\$23,168	\$22,769						\$1,539	7%
Less Expected Family Contribution*	<u>7,308</u>	<u>7,308</u>	<u>7,308</u>	<u>7,308</u>	<u>7,308</u>						0	0%
Financial Need	12,922	14,526	15,020	15,860	15,461						2,540	19%
Less Grant Aid	4,615	4,200	4,210	4,215	4,217						(195)	(4%)
Unmet Need	\$8,307	\$10,326	\$10,810	\$11,645	\$11,244						2,939	35%
% Grant Aid that Met Financial Need	35%	29%	28%	26%	27%							
Non-Grant Sources												
Remaining Unmet Financial Need												
College Work Study												
Need-based Loans												
Non-Need Based Loans												
Remaining Unmet Need												
*Amount Borrowed to meet EFC												

5

418 418

418 418

418 418

418 418

Section II

Campus-Level Financial Aid Trends of Full-Time, Degree-Seeking Missouri Undergraduates from FY09 to FY13

UM-Columbia (Table and Figure 2 series)

UM-Kansas City (Table and Figure 3 series)

Missouri S&T (Table and Figure 4 series)

UM-St. Louis (Table and Figure 5 series)

	FY09	FY10	FY11	FY12	FY13	5-yr # Change	5-yr % Change
Budgeted Cost of Attendance	\$20,683	\$20,848	\$21,398	\$22,341	\$22,385	\$1,702	8.2%
Tuition & Required Fees	\$8,467	\$8,501	\$8,501	\$8,989	\$9,257		

Table 2.1

Students with Need

# of Awards	Average Award	# of Awards
-------------	---------------	-------------

Table 2.3

	Exp		
	Family	Gift	Worke
Inc	Contributic	Aid	ome Level

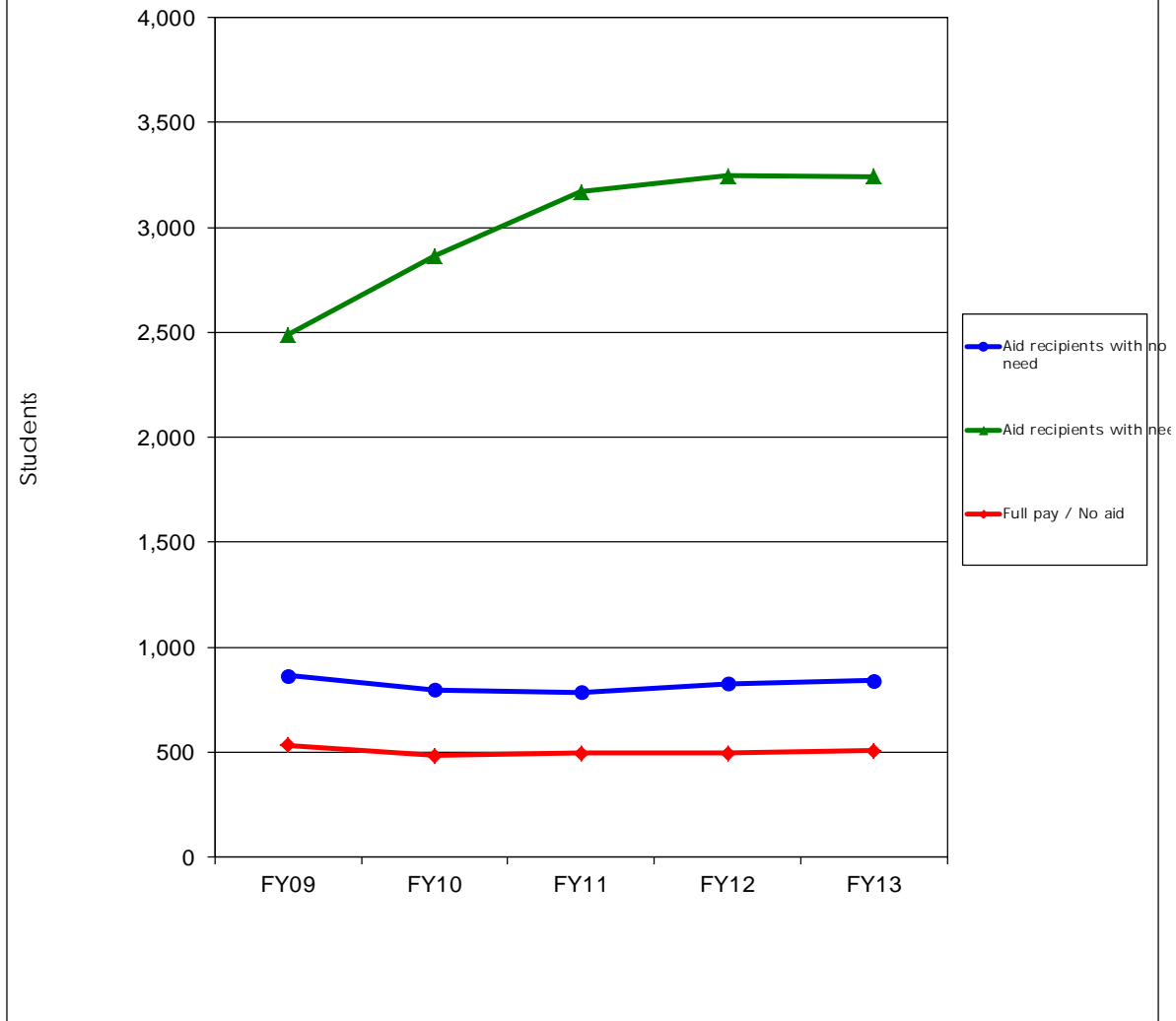
Source: UIDS, PeopleSoft
IR&P/LCB 12/13

Source: UIDS, PeopleSoft
IR&P/LCB 12/13

Table 2.5 (Continued)

	FY09	FY10	FY11	FY12	FY13	FY09	FY10	FY11	FY12	FY13	# Change FY09-FY13	% Change FY09-FY13
Total Enrolled for 9 months (N)	1,390	1,436	1,476	1,513	1,396						6	0%
Cost of Attendance	\$20,718	\$20,891	\$21,409	\$22,338	\$22,408						\$1,690	8%
Less Expected Family Contribution*	<u>10,387</u>	<u>9,838</u>	<u>9,392</u>	<u>9,392</u>	<u>9,265</u>	50%	47%	44%	42%	41%	-1,123	-11%
Financial Need	10,330	11,053	12,017	12,946	13,143	50%	53%	56%	58%	59%	2,813	27%
Less Grant Aid	3,911	3,687	3,548	3,803	4,117	19%	18%	17%	17%	18%	206	5%
Unmet Need	\$6,419	\$7,367	\$8,469	\$9,143	\$9,026	31%	35%	40%	41%	40%	2,606	41%
% Grant Aid that Met Financ	38%	33%	30%	28%	Need							
Non-Grant Sourc												
Remaining Unmet Financ												
College Work Study	\$142	\$121	\$108	\$104	\$86	1%	1%	1%	0%	0%	-56	-39%
Need-based Loans	3,240	3,580	3,706	3,664	3,502	16%	17%	17%	16%	16%	262	8%
Non-Need Based Loans	518	697	791	888	821	3%	3%	4%	4%	4%	303	58%
Remaining Unmet Need	\$2,519	\$2,969	\$3,864	\$4,487	\$4,616	12%	14%	18%	20%	21%	2,097	83%
*Amount Borrowed to meet EFC	\$3,518	\$3,397	\$3,335	\$3,244	\$3,106	17%	16%	16%	15%	14%	-412	-12%
	FY09	FY10	FY11	FY12	FY13	FY09	FY10	FY11	FY12	FY13	# Change FY09-FY13	% Change FY09-FY13
Total Enrolled for 9 months (N)	1104	1217	1296	1335	1346						242	22%
Cost of Attendance	\$20,753	\$20,923	\$21,468	\$22,368	\$22,469						\$1,717	8%
Less Expected Family Contribution*	<u>15,236</u>	<u>14,366</u>	<u>14,335</u>	<u>14,459</u>	<u>14,066</u>	73%	69%	67%	65%	63%	-1,170	-8%
Financial Need	5,517	6,557	7,133	7,909	8,404	27%	31%	33%	35%	37%	2,887	52%
Less Grant Aid	2,482	2,651	2,534	2,601	2,576	12%	13%	12%	12%	11%	94	4%
Unmet Need	\$3,035	\$3,907	\$4,599	\$5,308	\$5,828	15%	19%	21%	24%	26%	2,793	92%
% Grant Aid that Met Financ	45%	40%	36%	33%	Need							
Non-Grant Sourc												
Remaining Unmet Financ												
College Work Study	\$56	\$45	\$62	\$75	\$33	0%	0%	0%	0%	0%	-23	-42%
Need-based Loans	2,592	2,957	3,206	3,323	3,327	12%	14%	15%	15%	15%	736	28%
Non-Need Based Loans	314	420	464	502	560	2%	2%	2%	2%	2%	246	78%
Remaining Unmet Need	\$73	\$485	\$867	\$1,408	\$1,907	0%	2%	4%	6%	8%	1,834	
*Amount Borrowed to meet EFC	\$5,470	\$5,239	\$5,208	\$4,933	\$4,767	26%	25%	24%	22%	21%	-703	-13%
	FY09	FY10	FY11	FY12	FY13	FY09	FY10	FY11	FY12	FY13	# Change FY09-FY13	% Change FY09-FY13
Total Enrolled for 9 months (N)	512	643	795	975	1,026						514	100%
Cost of Attendance	\$20,766	\$21,100	\$21,582	\$22,527	\$22,614						\$1,848	9%
Less Expected Family Contribution*	<u>14,330</u>	<u>14,396</u>	<u>15,480</u>	<u>16,067</u>	<u>16,099</u>	69%	68%	72%	71%	71%	1,769	12%
Financial Need	6,435	6,703	6,101	6,460	6,515	31%	32%	28%	29%	29%	79	1%
Less Grant Aid	2,292	2,176	1,893	1,940	1,988	11%	10%	9%	9%	9%	-304	-13%
Unmet Need	\$4,143	\$4,527	\$4,209	\$4,520	\$4,527	20%	21%	20%	20%	20%	384	9%
% Grant Aid that Met Financ	36%	32%	31%	30%	Need							
Non-Grant Sourc												
Remaining Unmet Financ												
College Work Study	\$42	\$15	\$23	\$20	\$12	0%	0%	0%	0%	0%	-30	-72%

Figure 3.1
 Financial Aid Recipients at the University of Missouri-Kansas City, FY09- FY13



	FY09	FY10	FY11	FY12	FY13	5-yr # Change	5-yr % Change
Completed FAFSA, did not have a need	549	507	483	523	547	-2	-0.4%
Grant aid, no FAFSA	316	290	301	302	293	-23	-7.3%
Aid recipients with no need	865	797	784	825	840	-25	-2.9%
Aid recipients with need*	2,490	2,863	3,168	3,247	3,242	752	30.2%
Full pay / No aid	533	483	495	495	508	-25	-4.7%
Total of all full- time, Degree-Seeking MO	3,888	4,143	4,447	4,567	4,590	702	18.1%

* All aid recipients with need completed a FAFSA and were not expected to pay the entire cost of attendance.
 Note: Undergraduate Pharmacy and Medical students have been removed from this analysis.

Source: UIDS, EMSAS, and PeopleSoft
 IR&P/LCB 12/13

Table 3.1

Students with Need

of
Awards

Table 3.3

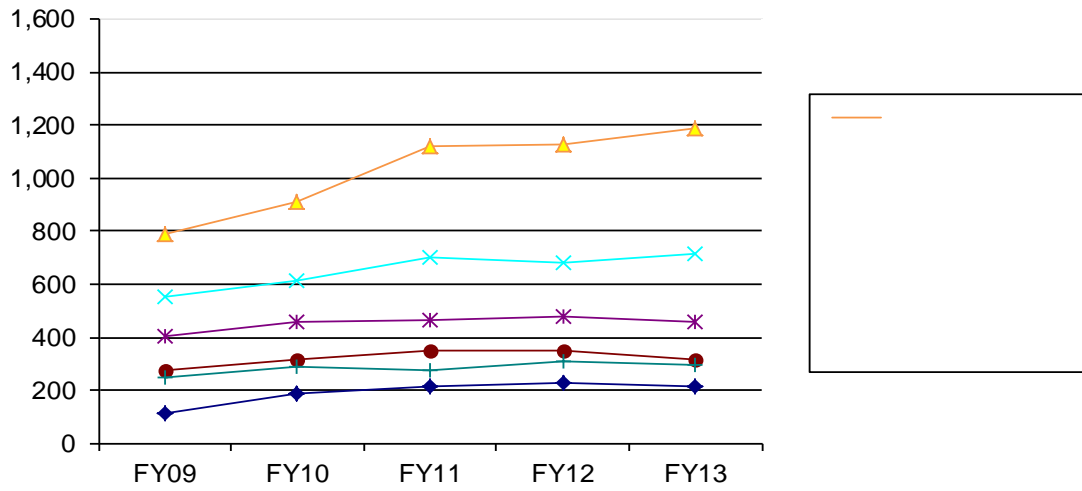
Total Financial

Financial Aid as % of Cost of Attendance
 Missouri-Kansas City, FY09 & FY13

Income	FY09					FY13				
	% COA Met by Source				% Unmet COA	% COA Met by Source				% Unmet COA
	Family Contribution	Gift Aid	Work Study	Loans		Family Contribution	Gift Aid	Work Study	Loans	
<\$20,000	4%	28%	2%	28%	38%	1%	25%	2%	31%	42%
\$20,000 to \$40,000	12%	23%	2%	21%	41%	7%	24%	1%	24%	43%
\$40,000 to \$60,000	25%	18%	2%	19%	37%	18%	20%	1%	22%	39%
\$60,000 to \$80,000	47%	15%	2%	16%	21%	36%	12%	0%	18%	33%
\$80,000 to \$100,000	66%	11%	1%	13%	9%	59%	10%	1%	15%	15%
>\$100,000	80%	11%	1%	10%	0%	75%	10%	0%	13%	2%

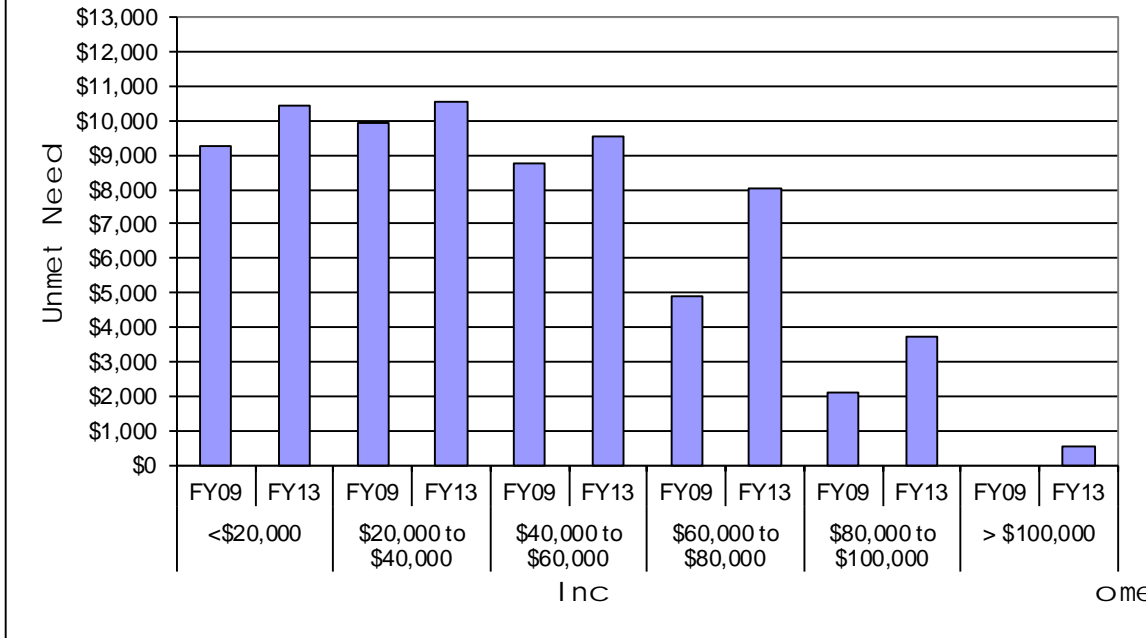
Source: UIDS, PeopleSoft
 IR&P/LCB 12/13

Figure 3.3
 Number of Full, Degree-Seeking 9-Month Undergraduate Missouri Residents w/ Inc - FY13
 Kansas City, FY09 The Uni



Source: UIDS, PeopleSoft
 IR&P/LCB 12/13

Figure 3.5
 Average Amount of Unmet Financial Need
 by Income Category, FY09 vs. FY13

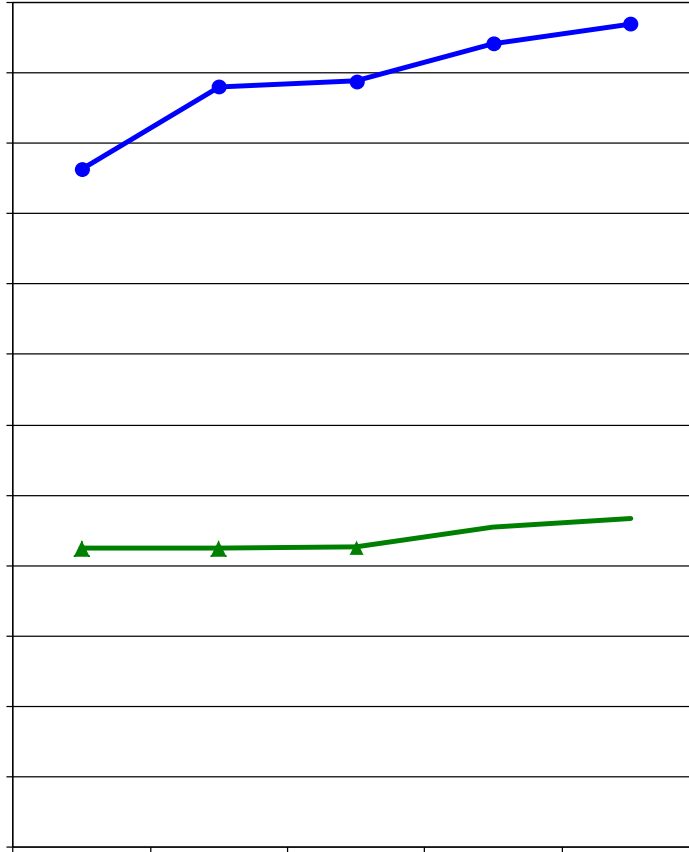


Source: UIDS, PeopleSoft
 IR&P/LCB 12/13

Table 3.5 (Continued)

F109	F110	F111	F112	F113	F109	F110	F111	F112	F113	# Change F109-F113	% Change F109-F113
------	------	------	------	------	------	------	------	------	------	-----------------------	-----------------------

	FY09	FY10	FY11	FY12	FY13	5-yr # Change	5-yr % Change
Completed FAFSA, did not have a need	896	712	668	657	694	-202	-22.5%



	FY09	FY10	FY11	FY12	FY13	5-yr # Change	5-yr % Change
Budgeted Cost of Attendance	\$19,260	\$21,600	\$21,766	\$22,828	\$23,380	\$4,120	21.4%
Tuition & Required Fees	\$8,488	\$8,488	\$8,528	\$9,084	\$9,350	\$862	10.2%
Average Grant Aid	\$4,966	\$5,598	\$5,426	\$5,013	\$5,159	\$193	3.9%

Source: UIDS, IPEDS Institutional Characteristics, PeopleSoft
IR&P/LCB 12/13

Table 4.1

Students with Need

# of Awards	Average Award	# of Awards	Average
-------------	---------------	-------------	---------

Table 4.3

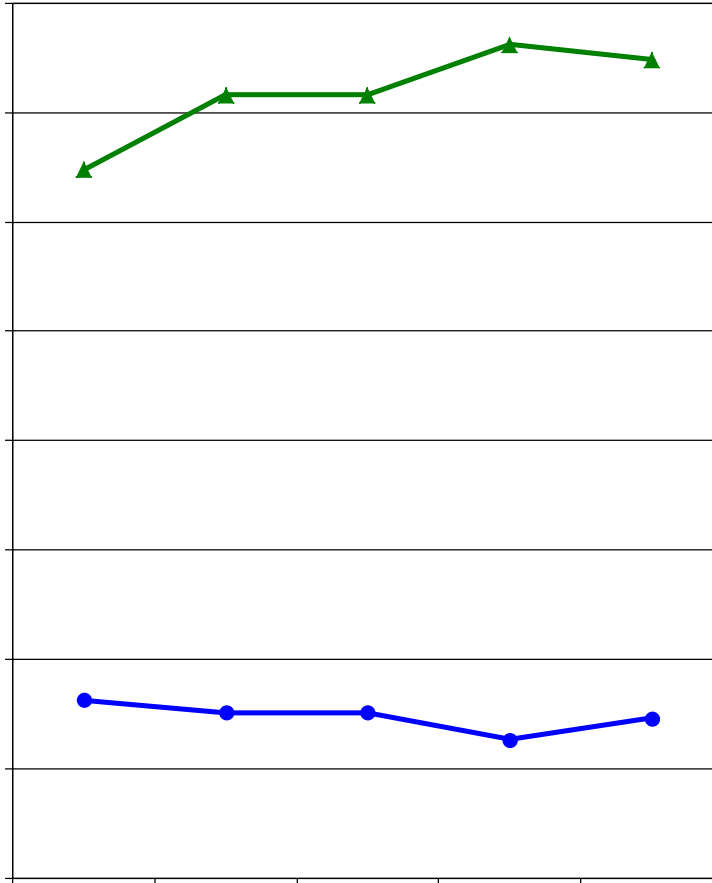
Inc	Exp				% Unmet COA	Exp				% Unmet COA
	Family Contributic	Gift Aid	Work Study	Loans		Family Contributic	Gift Aid	Work Study	Loans	

Table 4.5

	FY09	FY10	FY11	FY12	FY13	FY09	FY10	FY11	FY12	FY13	# Change FY09-FY13	% Change FY09-FY13
Total Enrolled for 9 months (N)	297											

Table 4.5 (Continued)

	FY09	FY10	FY11	FY12	FY13	FY09	FY10	FY11	FY12	FY13	FY09	FY10	FY11	FY12	FY13	# Change FY09-FY13	% Change FY09-FY13
Total Enrolled for 9 months (N)	347	368	438	387	388											41	12%
Cost of Attendance	\$19,187	\$21,568	\$21,749	\$22,809	\$23,325											\$4,137	22%
Less Expected Family Contribution*	<u>10,306</u>	<u>8,524</u>	<u>8,093</u>	<u>8,668</u>	<u>8,476</u>	54%	40%	37%	38%	36%						-1,831	-18%
Financial Need	8,881	13,043	13,656	14,140	14,849	46%	60%	63%	62%	64%						5,968	67%
Less Grant Aid	4,145	4,351	4,589	3,852	4,366	22%	20%	21%	17%	19%						222	5%
Unmet Need	\$4,736	\$8,692	\$9,067	\$10,288	\$10,482	25%	40%	42%	45%	45%						5,746	121%
% Grant Aid that Met Financial Need	47%	33%	34%	27%	29%												
Non-Grant Sources																	
Remaining Unmet Financial Need																22	202%
College Work Study	\$11	\$14	\$1	\$20	\$33	0%	0%	0%	0%	0%							
Need-based Loans	2,731	3,432	3,348	3,557	3,301	14%	16%	15%	16%	14%						570	21%
Non-Need Based Loans	83	328	1,003	1,323	1,405	0%	2%	5%	6%	6%						1,323	1597%
Remaining Unmet Need	\$1,912	\$4,919	\$4,715	\$5,389	\$5,743	10%	23%	22%	24%	25%						3,832	200%
*Amount needed to meet EFC			\$2,774	\$2,985	\$3,111	12%	13%	13%	15%	15%							7%
Total Enrolled for 9 months (N)	271	332															



	FY09	FY10	FY11	FY12	FY13	5-yr # Change	5-yr % Change
Completed FAFSA, did not have a need	482	492	492	384	528	46	9.5%
Grant aid, no FAFSA	<u>332</u>	<u>265</u>	<u>265</u>	<u>247</u>	<u>203</u>	<u>-129</u>	-38.9%
Aid recipients with no need	814	757	757	631	731	-83	-10.2%
Aid recipients with need*	3,239	3,580	3,580	3,811	3,743	504	15.6%
Full pay / No aid	<u>962</u>	<u>863</u>	<u>901</u>	<u>689</u>	<u>688</u>	<u>-274</u>	-28.5%
Total of all full- time, Degree-Seeking MO	<u>5,015</u>	5,200	5,238	5,131	5,162	147	2.9%

* All aid recipients with need completed a FAFSA and were not expected to pay the entire cost of attendance.

Source: UIDS, EMSAS, and PeopleSoft
IR&P/LCB 12/13

	FY09	FY10	FY11	FY12	FY13	5-yr # Change	5-yr % Change
Budgeted Cost of Attendance	\$23,435	\$24,055	\$24,913	\$25,303	\$22,366	-\$1,069	-4.6%
Tuition & Required Fees	\$8,595	\$8,595	\$8,631	\$9,038	\$9,314	\$719	8.4%

Table 5.1

Average Institutional Grant Award
Undergraduates at the University of Missouri-St. Louis, FY09 - FY13

Students with Need	FY09		FY10		FY11		FY12		FY13	
	# of Awards	Average Award	# of Awards	Average Award	# of Awards	Average Award	# of Awards	Average Award	# of Awards	Average Award
Type of Award Need*	198	\$3,080	114	\$2,678	111	\$2,833	450	\$1,668	972	\$1,536
Merit	842	\$2,515	907	\$2,743	1,001	\$2,974	1,029	\$3,843	1,051	\$4,201
Other**	301	\$2,065	221	\$2,399	304	\$1,866	277	\$2,303	243	\$2,238
Total	1,341	\$2,497	1,242	\$2,676	1,416	\$2,725	1,756	\$3,042	2,266	\$2,847
Students without Need	FY09		FY10		FY11		FY12		FY13	
	# of Awards	Average Award	# of Awards	Average Award	# of Awards	Average Award	# of Awards	Average Award	# of Awards	Average Award
Type of Award	358	\$2,934	347	\$3,170	359	\$3,160	330	\$4,212	377	\$4,319
Merit										
Other**	149	\$2,633	113	\$2,483	108	\$2,774	99	\$3,474	95	\$2,727
Total	507	\$2,846	460	\$3,001	467	\$3,070.76	429	\$4,042.15	472	\$3,998.97

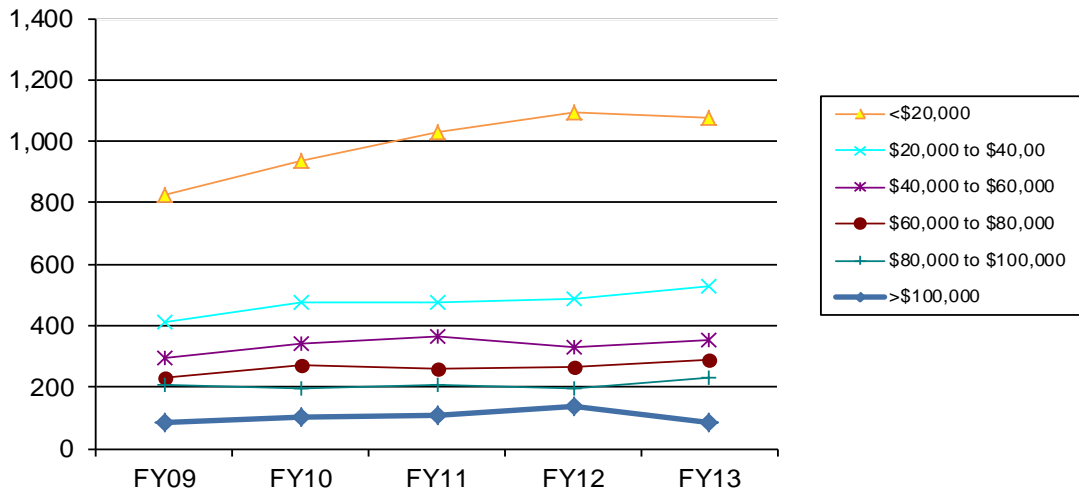
*The amount and type of institutional need-based funding changes each year at UMSL.

**Includes athletic aid and tuition waivers.

Source: UIDS, PeopleSoft

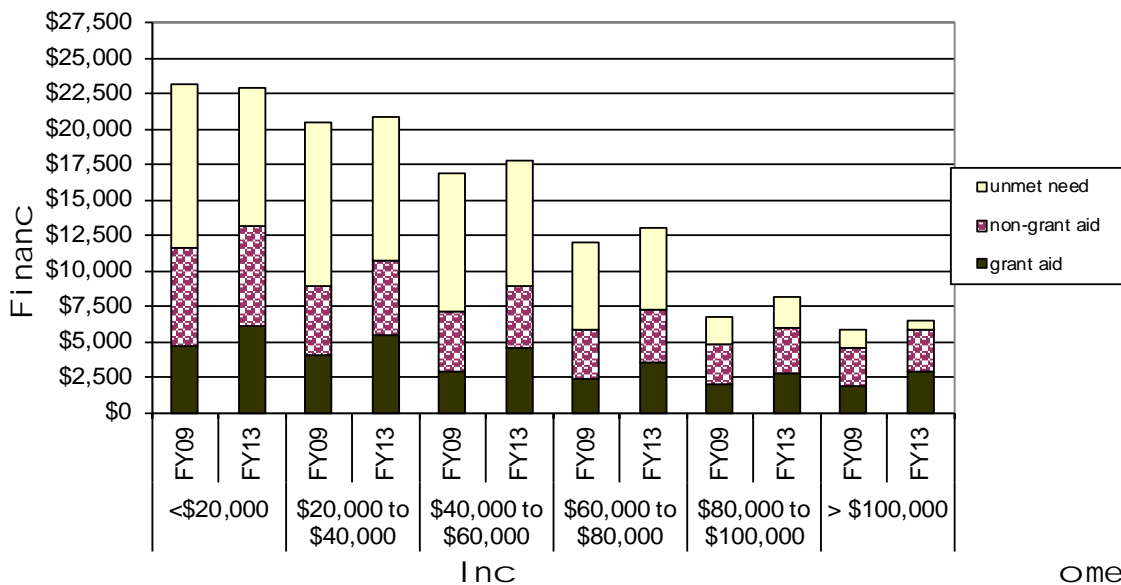
IR&P/LCB 12/13

Figure 5.3
 Number of First, Degree-Seeking 9-Month Undergraduate
 Missouri Residents with
 University of Missouri - St. Louis, FY09-FY13



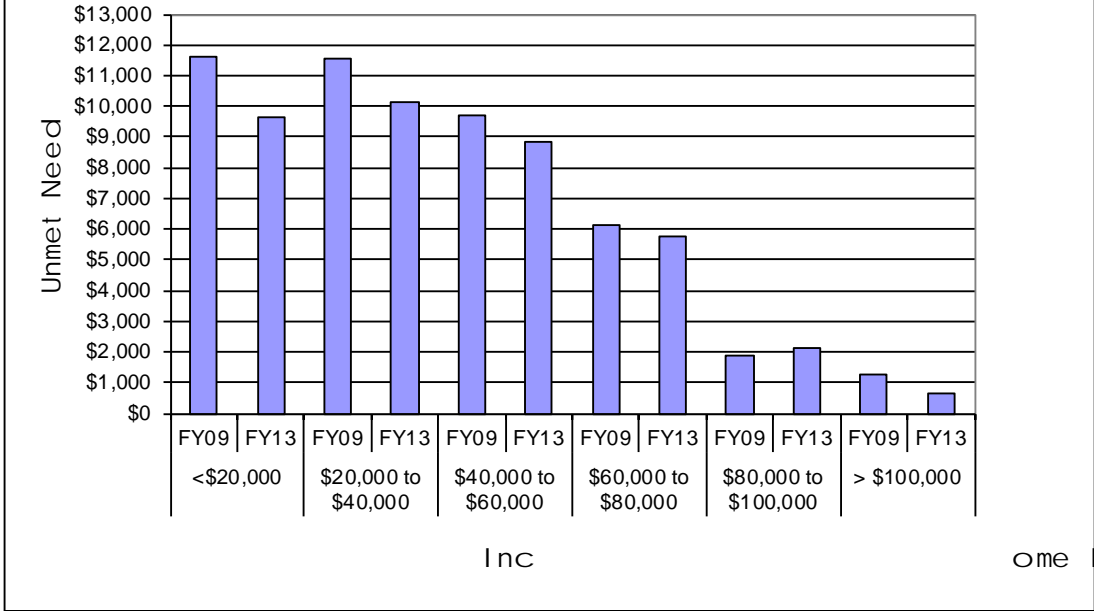
Source: UIDS, PeopleSoft
 IR&P/LCB 12/13

Figure 5.4
 Distribution of Grant Aid, Non-Aid, and Unmet Need by
 Income Level at the U
 -St. Louis, FY09 and FY13



Source: UIDS, PeopleSoft
 IR&P/LCB 12/13

Figure 5.5
 Average Amount of Unmet Financial Need
 by Income Level, FY09 vs. FY13



Source: UIDS, PeopleSoft
 IR&P/LCB 12/13

Table 5.5

FY09	FY10	FY11	FY12	FY13	FY09
------	------	------	------	------	------

